

Alba Home Sirmione srl Piazza Unità D'Italia 4 25019 Sirmione (BS) Tel 0309905560 - Cel 3246952832 buyer@albaluxury.it www.albaluxury.it



Castle Sale in Castello Cabiaglio (VA) Via Guglielmo Marconi 1

Villa Sale in Castello Cabiaglio (VA) Via Guglielm

Located in the charming historic village dating back to Roman times, in a stunning position in Valcuvia, the property for sale is situated at approximately 500 meters above sea level, within the Campo dei Fiori Regional Park, just a few kilometers from Lake Maggiore. This prestigious complex, dating back to the 16th century, offers a unique blend of architectural and naturalistic value, with a rich history that includes distinguished guests such as Giuseppe Garibaldi and the artist Aligi Sassu.

The noble palace, once a hunting lodge of the Visconti-Sforza family, spans four levels totaling approximately 1,100 square meters of gross area, enriched by a private garden of 900 square meters. The horseshoe-shaped building retains original historical elements such as stuccoes, frescoes, and fireplaces, overlooking a large inner courtyard. Inside, there are elegant halls with decorated wooden coffered ceilings, as well as numerous dining rooms and living areas. An adjacent tower, with frescoed loggias and panoramic terraces, offers additional living spaces, while a former complex of stables and barns has been converted into 6 separate apartments.

The property also includes two small independent buildings and a large green area of approximately 5,000 square meters, with gardens and terraces adorned by lush vegetation. Particularly noteworthy is the majestic wisteria from 1587, one of the largest in Europe, which embellishes the inner facade of the palace.

The property represents an investment opportunity for the creation of a scattered hotel, a concept that combines the experience of staying in a historical setting with modern comforts. The entire village, with its captivating medieval center, is perfectly suited for this project, with potential for tourist and commercial development through the creation of holiday homes, restaurants, and shops. The strategic location, close to numerous lakes and tourist attractions, ensures a high potential for attracting the growing tourism in the area.

The complex is only 15 km from Varese and Laveno, 40 km from Lake Como, and 70 km from Milan, making it easily accessible and surrounded by a natural setting of unparalleled beauty.

INFORMATION

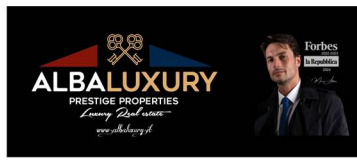
Ref.	Lago Maggiore
Type	Sale
Category	Castle
Price	1,950,000.00
Annual Expense	
Year	
Energetic Class	D 198.21

NUMBER

Rooms	15
Bedrooms	12
Bathrooms	7
Balconies + Terraces	
Floor	
Car Space	
Box	

SQUARE METERS

Commercial	1000
Garden	1000
Cellar	
Balconies + Terraces	
Attic	
Tavern	
Box	



Alba Home Sirmione srl Piazza Unità D'Italia 4 25019 Sirmione (BS) Tel 0309905560 - Cel 3246952832 buyer@albaluxury.it www.albaluxury.it

FEATURES

Property Conditions	Perfect Conditions	Rank	Elegant	Position	Hill
View	Open View	Orientation	North West South East	Garden	Private
Furniture	Possibility	Type living	Living room	Kitchen	Eat-In Kitchen
Heating	Independent	Heating Type	Boiler	Type of heating system	Radiator heating
Energy source	Gas	Hot Water	Independent	Cooling	Split
Fixtures	Wooden double glazed	Doors	Excellent	Blind	Wooden blind

ACCESSORIES

Air conditioning

Fireplace

Chimney flue

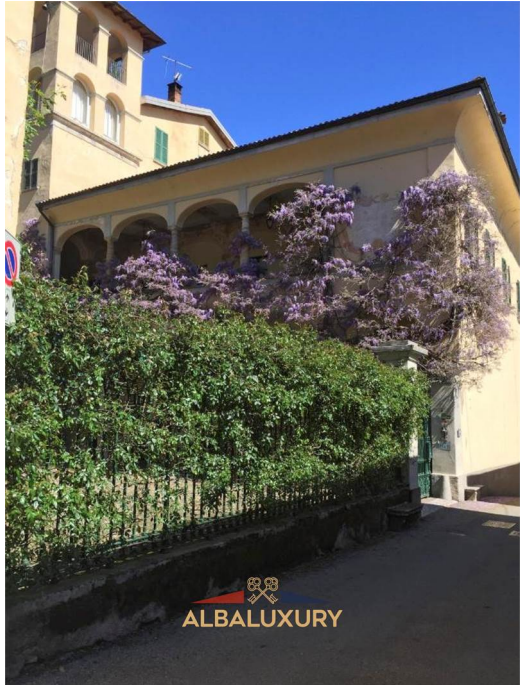
Electric gate

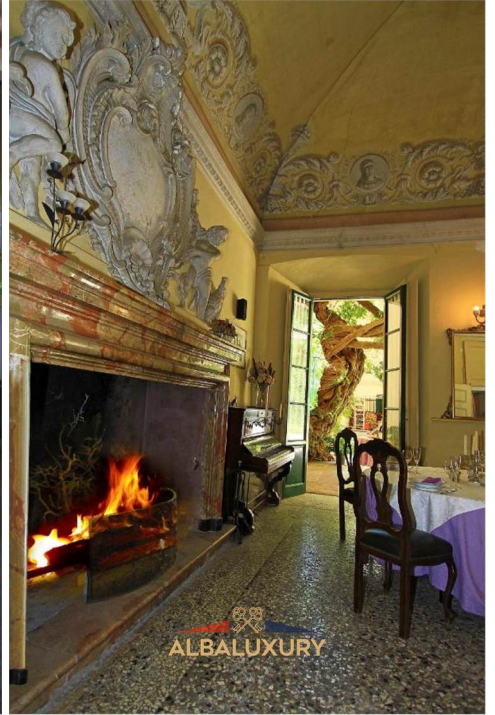
Double glazing

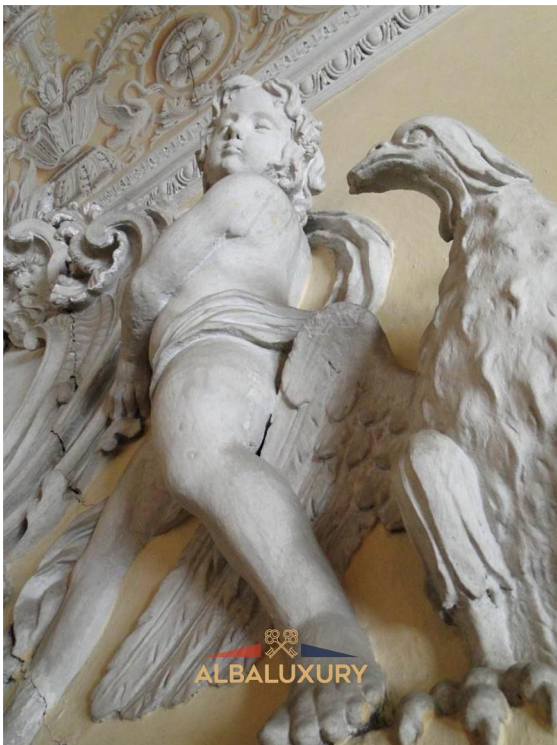
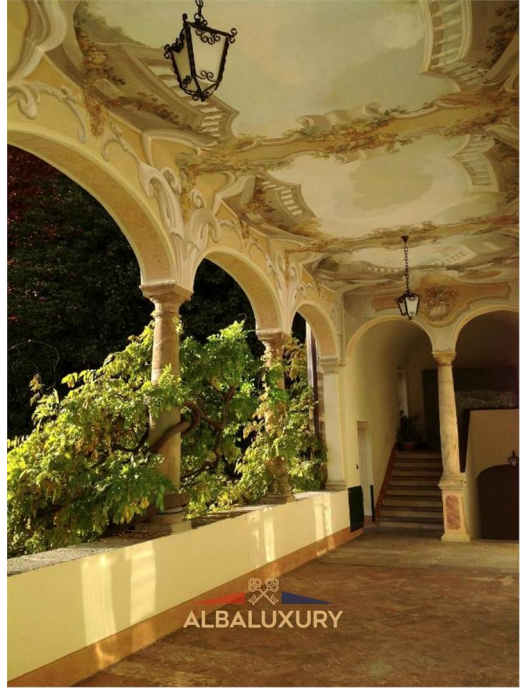
IMAGES

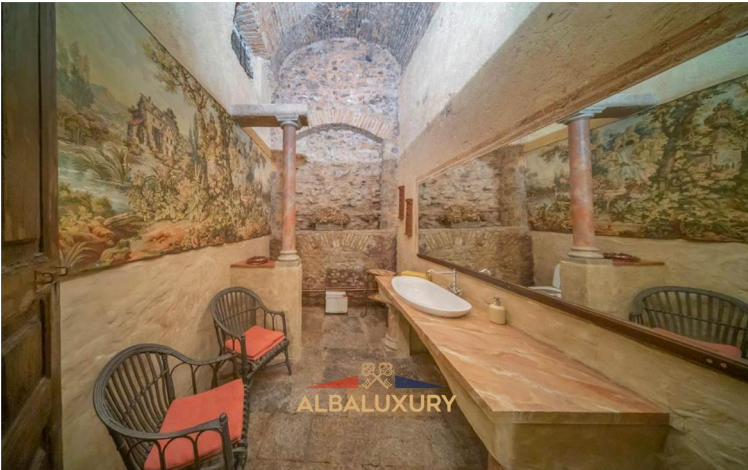


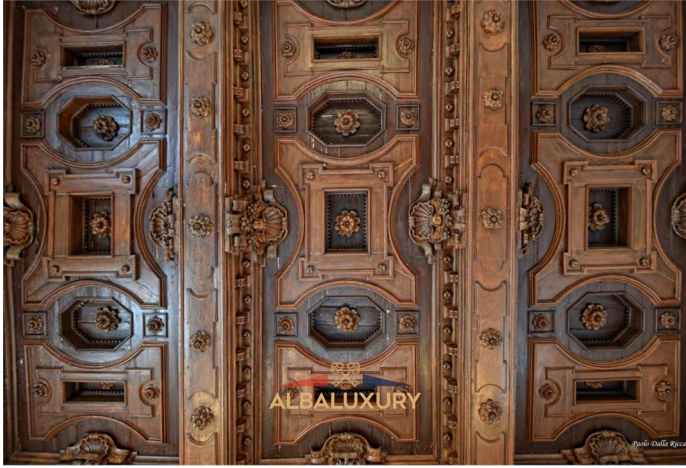
Alba Home Sirmione srl Piazza Unità D'Italia 4 25019 Sirmione (BS) Tel 0309905560 - Cel 3246952832 buyer@albaluxury.it www.albaluxury.it



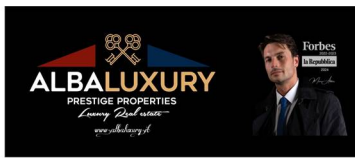












Alba Home Sirmione srl Piazza Unità D'Italia 4 25019 Sirmione (BS) Tel 0309905560 - Cel 3246952832 buyer@albaluxury.it www.albaluxury.it



A black rectangular box containing the Albaluxury logo at the top, followed by the text 'ALBALUXURY PRESTIGE PROPERTIES'. Below this, it reads 'FOR CONFIDENTIALITY REASONS, PLANS ARE ONLY RELEASED ON REQUEST'. At the bottom, the email address 'INFO@ALBALUXURY.IT' is displayed.