



Alba Home Sirmione srl Piazza Unità D'italia 4 25019 Sirmione (BS) Tel 0309905560 - Cel 3246952832 buyer@albahome.it www.albaluxury.it



## Villa Sale in Radicondoli (SI) Via Tiberio Gazzo 1

### Farmhouse with panoramic location, Tuscany

In the heart of the green Tuscan countryside, 15 km from Radicondoli and 45 minutes from Siena, this prestigious agriturismo stands in a panoramic position, offering breathtaking views of the sunsets that paint the surrounding landscape. Enveloped by a vast park, this haven of peace and tranquillity is a complete property of 2,500 square metres, including swimming pools and a restaurant, enriched by an additional 2,000 square metres of sheds and equipped with a 100 kW photovoltaic system. This impressive piece of land extends over a 170-hectare estate, which is mainly dedicated to the cultivation of cereals. The company's diverse production also includes olive oil, plums and jams, offering an authentic experience of Tuscan culinary richness. The flats are tastefully furnished in a traditional Tuscan style and have a private entrance. Facilities include: 2 swimming pools, sauna, panoramic whirlpool bath with breathtaking views, volleyball court for sports activities, covered parking. The property includes a secluded villa with an exclusive pool, featuring 4 bedrooms, 2 bathrooms, a large living-dining room with kitchenette, and additional rooms on the first floor. The ground floor houses partially renovated former stables, adding value and versatility to the property. Within the same site, there are two other buildings: one partially renovated and one to be renovated, offering opportunities for expansion or customisation of the property. Approximately 2 km away, the second farmhouse offers six separate accommodations, two of which boast 4 bedrooms and 3 bathrooms each, complete with living room, dining room and kitchenette. Three other lodgings feature 2 bedrooms, a bathroom, living room, dining room and kitchenette/kitchen. A further one-room accommodation is equipped with a bathroom and kitchenette. The ground floor of the building houses a room specifically dedicated to a catering kitchen, internal rooms, bathrooms and a technical room. In addition, there are two ancillary buildings, currently used for storage and laundry, with prospects for renovation to realise their full potential. The strategic location, only 2 km from the hamlet of Monteguidi in the municipality of Casole d'Elsa, offers a quiet and reserved environment. The property offers a wide range of possibilities and lends itself perfectly to various destinations, from private residences to prestigious accommodation facilities. Tuscany is one of the best known and most appreciated places by visitors from all over the world for its typical succession of unique landscapes, characterised by gentle green hills, rich in dense woods, large expanses of vineyards and olive groves, small villages, medieval castles and wineries where you can taste the best wines in the world.

#### INFORMATION

Ref.	Toscana 698
Type	Sale
Category	Villa
Price	Reserved
Annual Expense	
Year	
Energetic Class	VA

#### NUMBER

Rooms	30
Bedrooms	12
Bathrooms	18
Balconies + Terraces	
Floor	
Car Space	
Box	

#### SQUARE METERS

Commercial	3520
Garden	1650000
Cellar	
Balconies + Terraces	
Attic	
Tavern	
Box	



Alba Home Sirmione srl Piazza Unità D'italia 4 25019 Sirmione (BS) Tel 0309905560 - Cel 3246952832 buyer@albahome.it www.albaluxury.it

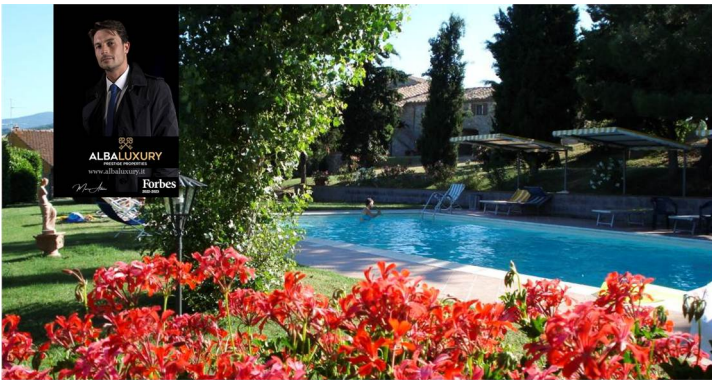
## FEATURES

Property Conditions	Renovated	Rank	Elegant	View	Open View
Orientation	North West South East	Free Sides	4	Garden	Private
Heating	Independent				

## ACCESSORIES

Fireplace	Photovoltaic system	Swimming pool	Data network	Storage room
Jacuzzi tub				

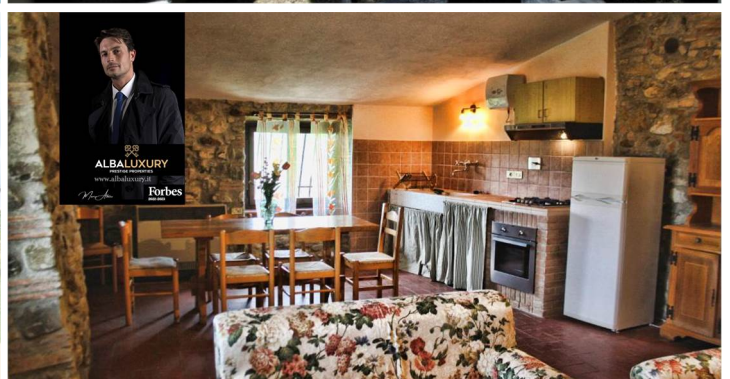
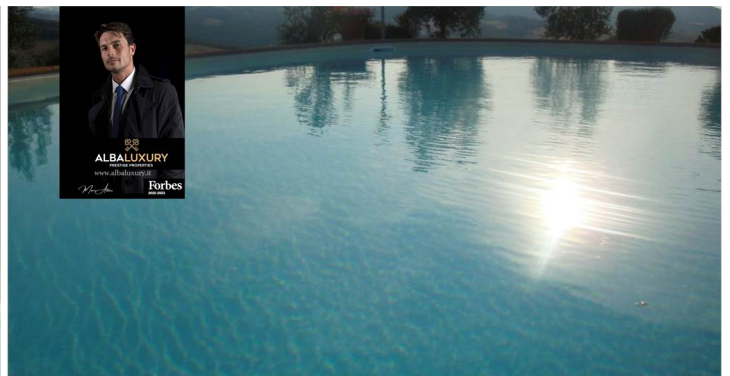
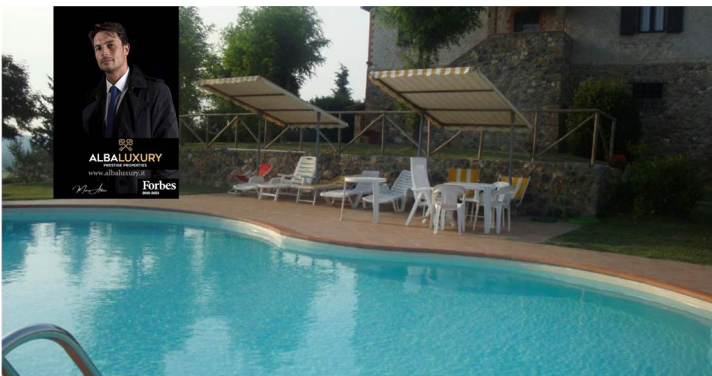
## IMAGES







Alba Home Sirmione srl Piazza Unità D'italia 4 25019 Sirmione (BS) Tel 0309905560 - Cel 3246952832 buyer@albahome.it www.albaluxury.it







Alba Home Sirmione srl Piazza Unità D'italia 4 25019 Sirmione (BS) Tel 0309905560 - Cel 3246952832 buyer@albahome.it www.albaluxury.it

